

# 100

## Shockmaster™ Kingpinless Casters



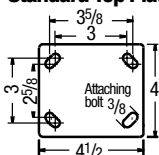
Particularly well-suited to any type of power-towed applications where impact and shock loading cause failure in conventional king bolt and nut swivel casters.

### TYPICAL APPLICATIONS

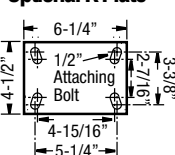
- Dough troughs
- Platform trucks
- Tow line
- Utility carts
- Tooling fixtures
- Scrap metal carriers

### MOUNTING OPTIONS

#### Standard Top Plate



#### Optional K Plate



### Swivel Cross Section



### FEATURES

- **Top Plate:** 1/4" thick AISI 1045 steel one-piece forging precision machined and through-hardened for long life
- **Yoke Base:** Notched AISI 1023 steel hardened to 50 Rockwell C
- **Swivel Section:** 3/8" ball bearings mounted in a precision machined raceway. Zerk in swivel section.
- **Axle:** 1/2" diameter hollow axle with zerk fitting on roller and tapered bearing models (Solid axle on Delrin, precision ball, and Oilex models)
- **Finish:** Zinc plating
- Alternate or custom caster configurations available

### BEARING OPTIONS



### BRAKE OPTIONS

Cam specify **CB100**



**Single Side SSB100. Double Sided specify DSB100.**



**NEW! Face Brake Specify FBB**

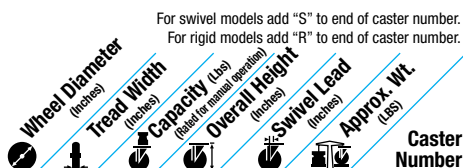


**New! Face Brake specify FBC**

Hand operated field installable swivel lock specify **SL160000**



Foot operated field installable swivel lock specify **SL160002**



### Moldon Rubber on Cast Iron (02 Drawn Cup Roller Bearing)

Wheel Diameter (Inches)	Tread Width (Inches)	Capacity (Lbs)	Overall Height (Inches)	Swivel Lead (Inches)	Approx. Wt. (Lbs)	Caster Number
4	2	300	5 <sup>5</sup> / <sub>8</sub>	1 <sup>11</sup> / <sub>16</sub>		100MR04202
5	2	450	6 <sup>1</sup> / <sub>2</sub>	1 <sup>11</sup> / <sub>16</sub>		100MR05202
6	2	500	7 <sup>1</sup> / <sub>2</sub>	1 <sup>5</sup> / <sub>8</sub>		100MR06202
8	2	600	10 <sup>1</sup> / <sub>8</sub>	1 <sup>3</sup> / <sub>4</sub>		100MR08202

MR

### Moldon Rubber on Aluminum (02 Drawn Cup Roller Bearing)

Wheel Diameter (Inches)	Tread Width (Inches)	Capacity (Lbs)	Overall Height (Inches)	Swivel Lead (Inches)	Approx. Wt. (Lbs)	Caster Number
4	2	400	5 <sup>5</sup> / <sub>8</sub>	1 <sup>11</sup> / <sub>16</sub>		100MD04102
5	2	500	6 <sup>1</sup> / <sub>2</sub>	1 <sup>11</sup> / <sub>16</sub>		100MD05102
6	2	550	7 <sup>1</sup> / <sub>2</sub>	1 <sup>5</sup> / <sub>8</sub>		100MD06202
8	2	600	10 <sup>1</sup> / <sub>8</sub>	1 <sup>3</sup> / <sub>4</sub>		100MD08202

MD

### X-tra Soft (Flat Tread) (02 Drawn Cup Roller Bearing)\*

Wheel Diameter (Inches)	Tread Width (Inches)	Capacity (Lbs)	Overall Height (Inches)	Swivel Lead (Inches)	Approx. Wt. (Lbs)	Caster Number
4	2	350	5 <sup>5</sup> / <sub>8</sub>	1 <sup>11</sup> / <sub>16</sub>		100XS04202
5	2	375	6 <sup>1</sup> / <sub>2</sub>	1 <sup>11</sup> / <sub>16</sub>		100XS05202
6	2	600	7 <sup>1</sup> / <sub>2</sub>	1 <sup>5</sup> / <sub>8</sub>		100XS06202
8	2	675	10 <sup>1</sup> / <sub>8</sub>	1 <sup>3</sup> / <sub>4</sub>		100XS08202

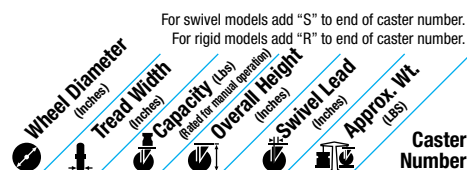
XS

Prevenz™ antimicrobial models available.

Add PREV to end of caster number.

\*Precision Ball (28) and Delrin (51) Bearings available.

Change "02" to other bearing code. Precision Ball example: 100XS04228. Note: For precision 6x2 and 8x2 cap. is 500lbs each.



### X-tra Soft Round Tread (02 Drawn Cup Roller Bearing)\*

Wheel Diameter (Inches)	Tread Width (Inches)	Capacity (Lbs)	Overall Height (Inches)	Swivel Lead (Inches)	Approx. Wt. (Lbs)	Caster Number
6	2	450	7 <sup>1</sup> / <sub>2</sub>	1 <sup>5</sup> / <sub>8</sub>		100XR06202
8	2	600	10 <sup>1</sup> / <sub>8</sub>	1 <sup>3</sup> / <sub>4</sub>		100XR08202

Prevenz™ antimicrobial models available.  
Add PREV to end of caster number.  
\*Precision Ball (28) and Delrin (51) Bearings available.  
Change "02" to other bearing code. Precision Ball example: 100XR06228. Note: For precision 8x2 cap. is 500lbs each.

XR

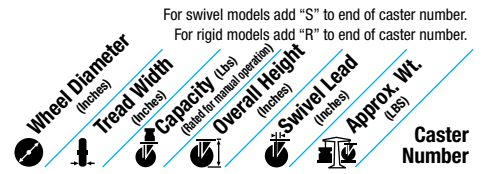
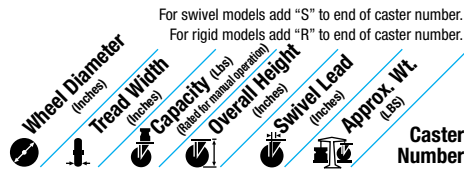
### High Modulus Rubber on Aluminum (28 Precision Ball Bearings)

Wheel Diameter (Inches)	Tread Width (Inches)	Capacity (Lbs)	Overall Height (Inches)	Swivel Lead (Inches)	Approx. Wt. (Lbs)	Caster Number
5	2	300	6 <sup>1</sup> / <sub>2</sub>	1 <sup>3</sup> / <sub>8</sub>		100RM05228
6	2	350	7 <sup>1</sup> / <sub>2</sub>	1 <sup>9</sup> / <sub>16</sub>		100RM06228
8	2	450	10 <sup>1</sup> / <sub>8</sub>	2 <sup>1</sup> / <sub>4</sub>		100RM08228

RM



For black tread specify "RL" wheel code (example 110RL05228).



**Pneumatic (27 Industrial Ball Bearing)**

SF		6	2	200	7 1/2	1 5/8	100SF06227
		8	2	210	10 1/8	1 3/4	100SF08227

**Polypropylene (02 Drawn Cup Roller Bearing)\***

PB		4	2	450	5 5/8	1 11/16	100PB04202
		5	2	650	6 1/2	1 11/16	100PB05202
		6	2	750	7 1/2	1 5/8	100PB06202
		8	2	1000	10 1/8	1 3/4	100PB08202

\*Delrin (51) Bearings or plain bore (41) models available.  
Change "01" example: 100PB04251.

**White Polypropylene (41 Plain Bore)**

PW		4	2	450	5 5/8	1 11/16	100PW04241
		5	2	650	6 1/2	1 11/16	100PW05241
		6	2	750	7 1/2	1 5/8	100PW06241

**Fiberglass Filled Polypropylene (01 Roller Bearing)\***

GP		4	2	350	5 5/8	1 11/16	100GP04202
		5	2	800	6 1/2	1 11/16	100GP05202
		6	2	1000	7 1/2	1 5/8	100GP06202
		8	2	1400	10 1/8	1 3/4	100GP08202

\*Delrin (51) Bearings or plain bore (41) models available.  
Change "01" example: 100GP04251.

**High Temp Polypropylene (41 Plain Bore)**

RW		4	2	500	5 5/8	1 11/16	100RW04241
		5	2	650	6 1/2	1 11/16	100RW05241
		6	2	700	7 1/2	1 5/8	100RW06241
		8	2	900	10 1/8	1 3/4	100RW08241

**Polyurethane on Aluminum (02 Drawn Cup)**

PD		4	2	700	5 5/8	1 11/16	100PD04202
		5	2	1050	6 1/2	1 11/16	100PD05202
		6	2	1230	7 1/2	1 5/8	100PD06202
		8	2	1500	10 1/8	1 3/4	100PD08202

**Polyurethane on Cast Iron (02 Drawn Cup Roller Bearing)**

PI		4	2	700	5 5/8	1 11/16	100PI04202
		5	2	1000	6 1/2	1 11/16	100PI05202
		6	2	1200	7 1/2	1 5/8	100PI06202
		8	2	1500	10 1/8	1 3/4	100PI08202

**Polyurethane on Aluminum Round Tread (28 Precision Ball Bearings)**

PM		5	2	1000	6 1/2	1 11/16	100PM05228
		6	2	1250	7 1/2	1 11/16	100PM06228
		8	2	1500	10 1/8	1 3/4	100PM08228

**Polyurethane on Polypropylene (02 Drawn Cup Roller)**

XA		4	2	600	5 5/8	1 11/16	100XA04202
		5	2	750	6 1/2	1 11/16	100XA05202
		6	2	900	7 1/2	1 3/4	100XA06202
		8	2	1000	10 1/8	1 3/4	100XA08202

Prevenz™ antimicrobial models available.  
Add PREV to end of caster number.

**X-Treme™ Solid Polyurethane (02 Drawn Cup Roller)\***

XI		4	2	1000	5 5/8	1 11/16	100XI04202
		5	2	1000	6 1/2	1 11/16	100XI05202
		6	2	1000	7 1/2	1 5/8	100XI06202
		8	2	1400	10 1/8	1 3/4	100XI08202

\*Drawn Cup Roller (02), Bronze (22), Pedestal Precision (29), Annular Ball (31) and Delrin (51) bearings available. Change "01" to other bearing code. Pedestal Precision example: 100XI04229.

**X-Treme™ Plus Solid Polyurethane (02 Drawn Cup Roller)\***

XP		4	2	1400	5 5/8	1 11/16	100XP04202
		5	2	1200	6 1/2	1 11/16	100XP05202
		6	2	1400	7 1/2	1 5/8	100XP06202
		8	2	1200	10 1/8	1 3/4	100XP08202

Prevenz™ antimicrobial models available. Add PREV to end of model.  
\*Drawn Cup Roller (02), Bronze (22), Pedestal Precision (28), Annular Ball (31) and Delrin (51) bearings available. Change "01" to other bearing code. Pedestal Precision example: 100XP04228.

**V-Grooved Polyurethane (02 Drawn Cup Roller Bearing)\***

XV		4	2	300	5 5/8	1 11/16	100XV04202
		5	2	300	6 1/2	1 11/8	100XV05202
		6	2	300	7 1/2	1 5/8	100XV06202

**Phenolic (02 Drawn Cup Roller Bearing)**

TM		4	2	800	5 5/8	1 11/16	100TM04202
		5	2	1000	6 1/2	1 11/8	100TM05202
		6	2	1200	7 1/2	1 5/8	100TM06202
		8	2	1200	10 1/8	1 3/4	100TM08202

**Straight Sided Phenolic (02 Drawn Cup Roller Bearing)**

TH		4	2	1000	5 5/8	1 11/16	5	100TH04202
		5	2	1200	6 1/2	1 11/16	5 1/2	100TH05202
		6	2	1400	7 1/2	1 5/8	6 1/4	100TH06202

**Maxim® (02 Drawn Cup Roller Bearing)\***

NG		4	2	800	5 5/8	1 11/16	100NG04202
		5	2	1000	6 1/2	1 11/16	100NG05202
		6	2	1200	7 1/2	1 5/8	100NG06202
		8	2	1400	10 1/8	1 3/4	100NG08202

Prevenz™ antimicrobial models available. Add PREV to end of number.  
\*Drawn Cup Roller (02), Bronze (22), Pedestal Precision (29), Annular Ball (31) and Delrin (51) bearings available. Change "01" to other bearing code. Precision example: 100NG04228.

**Maxim® NR Noise Reduction (02 Drawn Cup Bearing)\***

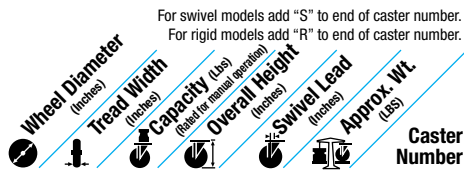
NR		4	2	800	5 5/8	1 11/16	100NR04202
		5	2	1000	6 1/2	1 11/16	100NR05202
		6	2	1200	7 1/2	1 5/8	100NR06202
		8	2	1400	10 1/8	1 3/4	100NR08202

\*Drawn Cup Roller (02), Bronze (22), Pedestal Precision (29), Annular Ball (31) and Delrin (51) bearings available. Change "02" to other bearing code. Pedestal Precision example: 100NR04228.

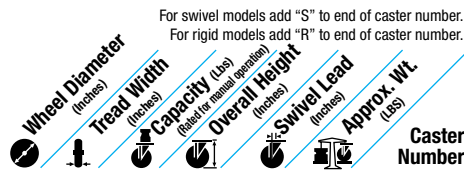
**White Nylon (01 Roller Bearing)\***

NW		5	2	600	6 1/2	1 11/16	100NW05202
		6	2	900	7 1/2	1 5/8	100NW06202
		8	2	1100	10 1/8	1 3/4	100NW08202

\*Delrin (51) Bearings or plain bore (00) models available.  
Change "01" example: 100NW05251.



For swivel models add "S" to end of caster number.  
For rigid models add "R" to end of caster number.



For swivel models add "S" to end of caster number.  
For rigid models add "R" to end of caster number.

**Hi-Temp Nylon (02 Drawn Cup Roller Bearing)**

	4	2	800	5 <sup>5</sup> / <sub>8</sub>	1 <sup>11</sup> / <sub>16</sub>	<b>100HE04202</b>	
	5	2	1000	6 <sup>1</sup> / <sub>2</sub>	1 <sup>11</sup> / <sub>16</sub>		<b>100HE05202</b>
	6	2	1200	7 <sup>1</sup> / <sub>2</sub>	1 <sup>5</sup> / <sub>8</sub>		<b>100HE06202</b>
	8	2	1400	10 <sup>1</sup> / <sub>8</sub>	1 <sup>3</sup> / <sub>4</sub>		<b>100HE08202</b>

HE

**Trionix™ High Impact Polymer (28 Precision Ball Bearings)**

	8	2	1700	10 <sup>1</sup> / <sub>8</sub>	1 <sup>3</sup> / <sub>4</sub>	<b>100NY08228</b>

NY

**Trionix™ NX High Impact Polymer (28 Precision Ball Bearings)**

	4	2	1700	5 <sup>5</sup> / <sub>8</sub>	1 <sup>11</sup> / <sub>16</sub>	<b>100NX04228</b>	
	5	2	1700	6 <sup>1</sup> / <sub>2</sub>	1 <sup>11</sup> / <sub>16</sub>		<b>100NX05228</b>
	6	2	1700	7 <sup>1</sup> / <sub>2</sub>	1 <sup>5</sup> / <sub>8</sub>		<b>100NX06228</b>
	8	2	1700	10 <sup>1</sup> / <sub>8</sub>	1 <sup>3</sup> / <sub>4</sub>		<b>100NX08228</b>

NX

**Cast Iron (02 Drawn Cup Roller Bearings)**

	4	2	700	5 <sup>5</sup> / <sub>8</sub>	1 <sup>11</sup> / <sub>16</sub>	<b>100CA04202</b>	
	5	2	1000	6 <sup>1</sup> / <sub>2</sub>	1 <sup>11</sup> / <sub>16</sub>		<b>100CA05202</b>
	6	2	1400	7 <sup>1</sup> / <sub>2</sub>	1 <sup>5</sup> / <sub>8</sub>		<b>100CA06202</b>
	8	2	1700	10 <sup>1</sup> / <sub>8</sub>	1 <sup>3</sup> / <sub>4</sub>		<b>100CA08202</b>

CA

**Heavy Duty Cast Iron (02 Drawn Cup Roller Bearings)**

	5	2	1500	6 <sup>1</sup> / <sub>2</sub>	1 <sup>11</sup> / <sub>16</sub>	<b>100CH05202</b>	
	6	2	1700	7 <sup>1</sup> / <sub>2</sub>	1 <sup>5</sup> / <sub>8</sub>		<b>100CH06202</b>
	8	2	1700	10 <sup>1</sup> / <sub>8</sub>	1 <sup>3</sup> / <sub>4</sub>		<b>100CH08202</b>

CH

**Drop Forge Steel (02 Drawn Cup Roller Bearings)\***

	4	1 <sup>1</sup> / <sub>2</sub>	1400	5 <sup>5</sup> / <sub>8</sub>	1 <sup>11</sup> / <sub>16</sub>	<b>100FS04102</b>	
	5	1 <sup>3</sup> / <sub>4</sub>	1500	6 <sup>1</sup> / <sub>2</sub>	1 <sup>11</sup> / <sub>16</sub>		<b>100FS05202</b>
	6	2	1500	7 <sup>1</sup> / <sub>2</sub>	1 <sup>5</sup> / <sub>8</sub>		<b>100FS06202</b>

FS

\*Tapered Roller bearings (09) available. Change "01" to other bearing code. (Example: 100FS04109).

**V-Groove Cast Iron (02 Drawn Cup Roller Bearings)\***

	4	2	800	5 <sup>5</sup> / <sub>8</sub>	1 <sup>11</sup> / <sub>16</sub>	<b>100VG04102</b>	
	5	2	800	6 <sup>1</sup> / <sub>2</sub>	1 <sup>11</sup> / <sub>16</sub>		<b>100VG05202</b>
	6	2	1000	7 <sup>1</sup> / <sub>2</sub>	1 <sup>5</sup> / <sub>8</sub>		<b>100VG06202</b>

VG

\*Tapered Roller bearings (09) available. Change "01" to other bearing code. (Example: 100VG04109).  
A Tapered bearing in a Forge Steel wheel can increase capacities to 2000 lbs

**Ductile Iron Crowned Tread (02 Drawn Cup Roller Bearing)**

	5	2	1500	6 <sup>1</sup> / <sub>2</sub>	1 <sup>11</sup> / <sub>16</sub>	<b>100FR05202</b>	
	6	2	1700	7 <sup>1</sup> / <sub>2</sub>	1 <sup>5</sup> / <sub>8</sub>		<b>100FR06202</b>
	8	2	1700	10 <sup>1</sup> / <sub>8</sub>	1 <sup>3</sup> / <sub>4</sub>		<b>100FR08202</b>

FR, FM

\*Tapered Roller bearings (09) and Precision Ball (28) available. (Tapered Roller example: 100FR05209).

Note: Ductile Iron Flat Tread (FM) models available. Change FR wheel code to FM. Example: 100FM05201.

**Prevenz™ Antimicrobial Wheels**

The EPA registered and FDA compliant antimicrobial additive used in Prevenz™ wheels is designed to suppress the growth of a variety of destructive and odor causing microbes including bacteria, molds, mildew and fungi. To order add "PREV" to end of caster number.



XS Prevenz™ XR Prevenz™ XA Prevenz™ NG Prevenz™ XP Prevenz™

# Wheel Bearing Selection Guide



## **Roller (01,05,07)**

Roller bearings are the standard bearing in most caster applications. 1-1/2 and 2 inch width wheels feature a cage separating hardened steel rollers and a hardened steel split outer race. These bearings must be used on a hardened bushing or shaft. Maximum temperature range is 350°F. All Casters and wheels are rated up to 2.5 mph operation per the Institute of Caster & Wheel Manufacturers Guidelines.



## **Precision Sealed Ball (28)**

Completely sealed, these precision ground ball bearings are held in a metal spacer ring between two hardened raceways. This bearing never needs to be lubricated, and with the lowest rolling resistance of all bearings offers the most ergonomic situation available. Maximum temperature range is 250°F.



## **Drawn Cup Roller (02)**

These are roller bearings as described above except they have metal cages holding the precision ground rollers. The outer race is a one-piece construction, giving added rigidity to the wheel bore. These bearings must be used on a hardened bushing or shaft. Maximum temperature range is 400°F.



## **Pedestal Precision Ball (29)**

These sealed precision ball bearings include an integral spanner which eliminates need for separate spanner. Maximum temperature range is 250°F.



## **Precision Tapered Roller (09)**

The tapered roller is the most effective bearing for heavy or towed loads. The taper allows for some thrust loading, while the heat-treated inner and outer race allow for maximum load capacity. Maximum temperature range is 400°F.



## **Annular Ball (31)**

A precision type bearing where the machined outer race and inner race are held together by the bearings. This option offers easy rolling and quiet operation for light to medium duty loads. This bearing must be factory installed in the wheel. Maximum temperature range is 250°F.



## **Bronze (22)**

Excellent for wash-down or steam cleaning applications. Bearings is designed for temperatures up to 525°F.



## **Plain Bore (41)**

In this option, no bearing material is used. The wheel runs directly on the axle or spanner bushing. This is the least expensive bearing option, but also results in a higher rolling resistance.



## **Oillex (23)**

These bearings are made of oil-impregnated sintered iron. Completely self-lubricating, these are ideal for situations where rolling force is less critical and accessibility for lubrication is difficult. Maximum temperature range is 450°F.



## **Two Piece Delrin (51)**

A DuPont™ engineered material, Delrin is designed for use in situations in which a self-lubricating material is optimal and corrosion cannot be tolerated. Ideal for wash-down or steam-cleaning applications as well as total immersion. Maximum temperature range is 160°F.



## **Radial Ball (Industrial Ball) (27)**

Shielded ball bearings are often referred to as "industrial grade" bearings. Pressed into the hub of lower capacity wheels, these low cost bearings decrease the effort required to move a load. Maximum temperature range is 250°F.



## **One Piece Delrin (52)**

This is a one-piece version of the Delrin bearing listed above. Good for use where thrust washers are needed or to add rigidity to a soft wheel which might cause the two piece bearing to be ejected from the bore of the wheel. Maximum temperature range is 160°F.

# Optional Features

We carry top plates with optional dimensions and bolt hole patterns. As shown in the chart, these will interchange with standard top plates. For an optional top plate not listed please consult factory. To order, begin with ST (swivel) or RT (Rigid) followed by the caster series number (i.e. 16) then end with the alpha designation (i.e. J).

Example: 16TM0620IS

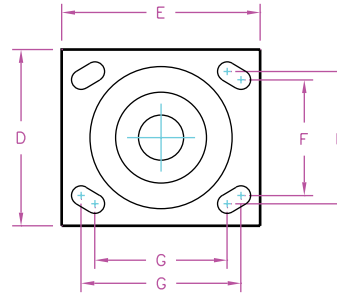
ST16J

Swivel top(ST), 16 series (16), bolt hole center (J)

Example: 272PD0620IR

RT272D

Rigid top (RT), dual wheel (2), 72 series (72), bolt hole center (D)



## Top Plate and Bolt Hole Center Chart

F & G Bolt Hole Centers (Inches)	D & E Top Plate Size (Inches)	Attaching Bolt (Inches)	Series 12, 16	Series 71	Series 72	Series 81	Series 94	Series 95	Series 18, 100, 110	Series 310, 410	Series 400
Slotted for 3 x 4 to 2-5/8 x 3-5/8	4 x 5	3/8	J	J							
Slotted for 3-3/8 x 5-1/4 to 2-7/16 x 4-15/16	4-1/2 x 6-1/4	1/2	K						K		
2-1/8 x 4	4 x 5	3/8		G							
3 x 3	4 x 4	3/8		H							
3-1/4 x 6	4-1/2 x 7-1/4	1/2			W	W					
4-1/8 x 4-1/2	5 x 5-1/2	3/8	D		D	D			D (110 only)		
4-7/8 x 6-3/4	Swivel 6-1/2 x 8 Rigid 6 x 8	5/8					C				
7 x 9-3/4	8-1/2 x 11	5/8						T			
Slotted for 4-5/8 x 5-1/2 to 4-3/8 x 5-5/8	6 x 7	1/2								S	N

## Optional Overall Heights

Series	Wheel Diameter (Inches)	Optional Height (Inches)	Swivel Lead (Inches)	Swivel Option Number	Rigid Option Number
12, 16, 33	3-1/4	5-1/4	1-11/16	HS42	HR42
12, 16, 33	4	5-1/4	1-11/16	HS86	HR86
12, 16, 33	5	6-1/8	1-11/16	HS-50	HR50
12, 16, 33	5	6-3/4	1-3/4	HS54	HR54
12, 16, 33	6	6-7/8	2-1/2	HS56	HR56
12	6	7-1/4	1-3/4	HS82	HR82
16	6	7-3/8	1-3/4	HS59	HR59
16	6	7-1/2	1-7/8	HS60	HR60
62	6	7-3/4	1-3/4	HS85	HR85
12, 16	8	10	1-3/4	HS81	HR81
34, 62	8	9-1/2	2-1/4	HS76	HR76
34, 62	8	9-3/4	1-3/4	HS83	HR83
63	8	9-1/2	2-1/4	HS84	HR84
100	8	9-1/2	2-1/2	HS89	HR89

# Replacement Parts

## Axle and Bearing Components for Standard Models (Consult factory for parts not in this chart)

Caster Series	Wheel Hub Length (Inches)	Axle Hollow	Axle Solid	NUT	Spanner Bushing	Lock Washer	Roller Bearing	Plain Retaining Washer	Sealed Retaining Washer	Nylon sealed combo-washer	Metal combo-washer	Thrust Washer
DC, PC, P2, 02 Series	1.25"	ZJ063502, ZJ063504		NL061600	ZF060824, ZF060826		ZB081718	WA081703				WA082400, WA082406
04 Series	1.25"	ZJ063510		NJ061600	ZF06082401							
05 Series	2.188"	ZJ085600	ZJ085603	NJ081311	ZF081240	WA081401	ZB12193001	WA121904	WA121990	WA121905		WA122603
12, 16, 18, 40, 61, 62, 71, 72, 110, 100	2.188"	ZJ085400	ZJ085403	NL082000	ZF081239		ZB121930	WA121900	WA121990	WA121905	WA121999	WA122600
42, 61, 62, 72, 78 Series	2.75"	ZJ086400	ZJ086403	NL082000	ZF081248		ZB121940	WA121900	WA121990	WA121905	WA121999	WA122600
63 Series	2.75"	ZJ126800		NL121001	ZF121648		ZB163140	WA163103	WA163190		WA163199	WA163900
44, 81, 84, 90, 92, 300, 310, 400, 410	3.25"	ZJ127600		NL121001	ZF121657, ZF12162057		ZB163148, ZB203948	WA163103, WA203103	WA163190, WA203190		WA163199,	WA163900, WA204800
330 Series	3.25"	ZJ12760009	ZJ128010	NJ121000	ZF12165703	WA122006	ZB16314803	WA16310304	WA16319001		WA163199	WA16390001
600 Series	3.25"		ZJ161496	NL161403	ZF162057		ZB203148, ZB203948	WA203103, WA203903	WA203190, WA203950		WA163199,	WA163900, WA204800
90, 92, 600 Series	4.25"	ZJ169601	ZJ161496	NL161403	ZF162073		ZB203964	WA203903	WA203990			WA204800

## Axle and Bearing Components for Standard Models (Consult factory for parts not in this chart) (Continued)

Caster Series	Wheel Hub Length (Inches)	Precision Ball Bearing	Delrin Bearing (2 pieces)	Delrin Bearing (1 piece)	Bronze Bearing	Oilex Bearing	Drawn Cup Roller Bearing	Top Hat Spacer
DC, PC, P2, 02 Series	1.25"							
04 Series	1.25"							
05 Series	2.188"		TF121912	TF121934	0I121908	Z0121935		
12, 16, 18, 40, 61, 62, 71, 72, 78, 110, 100	2.188"	ZA081903, ZA081904,	TF121912	TF121934	0I121908	Z0121935	ZX121930	ZY0812001
42, 61, 62, 72, 78 Series	2.75"		TF121912		0I121908			



**Roller Bearing**  
ZB121930  
Shown



**Spanner Bushing**  
ZF081239  
Shown



**Metal Step Retaining Thrust Washer**



**Nylon Sealed Retaining Thrust Washer**  
WA121905  
Shown



**Sealed Retaining Thrust Washer**



**Solid Axle & Nut**  
ZJ085409  
Shown



**Hollow Axle & Nut**  
ZJ085408  
Shown

# Replacement Parts



**Tapered Roller Bearing**

## Tapered Roller Bearings and Spacers

Kit Number	Cup Only Part Number*	Cone Only Part Number*	Bearing ID (Inches)	Bearing OD (Inches)	Notes	Spacer Number	Spacer ID (Inches)	Spacer OD (Inches)	Spacer Length (Inches)
ZT082200	ZT082201	ZT082202	0.500	1.375		ZM082800	0.500	1.750	0.000
ZT122800	ZT122801	ZT122802	0.750	1.780		ZY121600	0.750	1.000	0.231
ZT123100	ZT123101	ZT123102	0.750	1.938		ZY121600	0.750	1.000	0.231
ZT163200	ZT163202	ZT163101	1.000	1.979		ZY162004	1.000	1.250	0.281
ZT163900	ZT163901	ZT163902	1.000	2.438		ZY162005	1.000	1.250	0.313
ZT203900	ZT163901	ZT203911	1.250	2.438	Wider	ZY202406	1.250	1.500	0.348
ZT203920	ZT203901	ZT203902	1.250	2.438	Narrower	ZY202404	1.250	1.500	0.281
ZT203940	ZT203901	ZT203802	1.250	2.438	Sealed	SD203013	1.250	1.875	0.000
ZT205000	ZT205001	ZT205002	1.250	3.125		ZY202606	1.250	1.625	0.375
ZT244100	ZT244102	ZT244101	1.500	2.563		ZY242806	1.500	1.750	0.375
ZT245000	ZT205001	ZT245001	1.500	3.125		ZY242806	1.500	1.750	0.375

\* Purchased as kit only.

## Other Bearing Types

Bearing Part Number	Description of Bearing	Bearing ID (Inches)	Bearing OD (Inches)	Bearing Length (Inches)	Notes/Suggestions	Requires Part Number
ZA081900	Industrial Ball	0.500	1.188	1.875		
ZA081902	Industrial Ball	0.500	1.188	2.438	Butt Bearing	
ZA081903	Pedestal Precision Ball	0.500	1.188	2.438	Pedestal Bearing	
ZA081904	Precision Ball	0.500	1.188	2.438	Pedestal Bearing	
ZA122500	Precision Ball	20mm	40mm	Any	6203-2RS	ZY0812001
TF121912	Delrin	0.750	1.188	Any	Not with Cam Brake	
TF121934	Delrin	0.750	1.188	2.438		WA122600 or WA122603
OI121912	Bronze	0.750	1.188	Any		
ZO081722	Oil impregnated iron	0.500	1.063	1.250		
ZO081926	Oil impregnated iron	0.500	1.188	1.875		
ZO081935	Oil impregnated iron	0.500	1.188	2.438		
ZO101926	Oil impregnated iron	0.625	1.188	1.875		
ZO101935	Oil impregnated iron	0.625	1.188	2.438		
ZO121926	Oil impregnated iron	0.750	1.188	1.875		
ZO121935	Oil impregnated iron	0.750	1.188	2.438		



**Oilex Bearing**  
(Oil impregnated iron)

# Replacement Parts

## Straight Roller Bearing and Retaining Washers



**Roller Bearing**

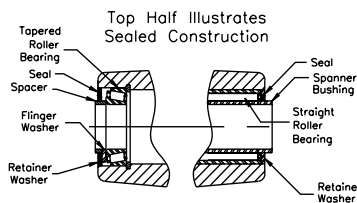


**Nylon Sealed Retaining Thrust Washer**



**Powdered Iron Step Retaining Thrust Washer**

Line drawing (below) section view shows typical wheel hub construction with sealed straight and tapered roller bearings. Note spacer tubes are used with tapered roller bearings which increases hub length 1/4" and facilitates proper loading of cup to cone. For non-sealed construction, seal is replaced with retainer and flinger washers.



Part Number	Roller Bearing ID (Inches)	Roller Bearing OD (Inches)	Roller Bearing Length (Inches)	Plain Retaining Washer Number	Rubber Sealed Retaining Washer	Nylon Combo Washer Number	Sintered Iron Combo Washer Number	Washer ID (inches)	Washer OD (inches)
ZB081718	0.500	1.063	1.125	WA081703	WA081790			0.500	1.063
ZB081922	0.500	1.188	1.375	WA121900				0.500	1.188
ZB081930	0.500	1.188	1.875	WA121900				0.500	1.188
ZB081932	0.500	1.188	2.000	WA121900				0.500	1.188
ZB101922	0.625	1.188	1.375	WA121900	WA101990			0.625	1.188
ZB101930	0.625	1.188	1.875	WA121900	WA101990			0.625	1.188
ZB101932	0.625	1.188	2.000	WA121900	WA101990			0.625	1.188
ZB101940	0.625	1.188	2.500	WA121900	WA101990			0.625	1.188
ZB121920	0.750	1.188	1.250	WA121900	WA121990	WA121905	WA121999	0.750	1.188
ZB121930	0.750	1.188	1.875	WA121900	WA121990	WA121905	WA121999	0.750	1.188
ZB12193001*	0.750	1.188	1.875	WA121904		WA121905		0.750	1.188
ZX121930	0.750	1.188	1.875	WA121900	WA121990	WA121905	WA121999	0.750	1.188
ZB121940	0.750	1.188	2.438	WA121900	WA121990	WA121905	WA121999	0.750	1.188
ZB142332	0.875	1.438	2.000	WA162303	WA142390			0.875	1.438
ZB162328	1.000	1.438	1.750	WA162303	WA162390			1.000	1.438
ZB162332	1.000	1.438	2.000	WA162303	WA162390			1.000	1.438
ZB163136	1.000	1.938	2.250	WA163103	WA163190		WA163199	1.000	1.938
ZB163140	1.000	1.938	2.500	WA163103	WA163190		WA163199	1.000	1.938
ZB163148	1.000	1.938	3.000	WA163103	WA163190		WA163199	1.000	1.938
ZB163164	1.000	1.938	4.000	WA163103	WA163190		WA163199	1.000	1.938
ZB183148	1.125	1.938	3.000	WA203103			WA203199	1.250	1.938
ZB203140	1.250	1.938	2.500	WA203103	WA203190		WA203199	1.250	1.938
ZB203148	1.250	1.938	3.000	WA203103	WA203190		WA203199	1.250	1.938
ZB203164	1.250	1.938	4.000	WA203103	WA203190		WA203199	1.250	1.938
ZB203948	1.250	2.438	3.000	WA203903	WA203990			1.250	2.438
ZB203964	1.250	2.438	4.000	WA203903	WA203990			1.250	2.438
ZB203980	1.250	2.438	5.000	WA203903	WA203990			1.250	2.438
ZB243948	1.500	2.438	3.000	WA243903	WA243990			1.500	2.438
ZB243964	1.500	2.438	4.000	WA243903	WA243990			1.500	2.438
ZB243980	1.500	2.438	5.000	WA243903	WA243990			1.500	2.438
ZB284964	1.625	3.063	4.000	WA284903				1.750	3.063
ZB284980	1.625	3.063	5.000	WA284903				1.750	3.063
ZB325264	2.000	3.250	4.000	WA325203				2.000	3.250
ZB325280	2.000	3.250	5.000	WA325203				2.000	3.250

\* Stainless Steel

Note: Straight roller bearings include roller assembly with split outer race but does not include the retaining washers. Retaining washers are ordered separately in quantities of 2 per wheel.

## Axles and Nuts



**Solid Axle & Nut**  
ZJ085409  
Shown



**Hollow Axle & Nut**  
ZJ085408  
Shown

Axle Part Number	Type	Matching Nut	Matching Lock Washer	Diameter (Inches)	Length (Inches)	Threads (Per Inch)	Notes
ZJ063502	Hollow	NL061600		0.375	2.188	16	No Grease Zerk
ZJ063504	Hollow	NL061600		0.375	2.188	16	
ZJ083510	Solid	NJ061600		0.375	2.188	16	Stainless Steel
ZJ084500	Hollow	NL082000		0.500	2.813	20	
ZJ085400	Hollow	NL082000		0.500	3.375	20	
ZJ085403	Solid	NL082000		0.500	3.375	20	
ZJ085600	Hollow	NJ081311	WA081401	0.500	3.500	13	Stainless Steel
ZJ085603	Solid	NJ081311	WA081401	0.500	3.500	13	Stainless Steel
ZJ086400	Hollow	NL082000		0.500	4.000	20	
ZJ086403	Solid	NL082000		0.500	4.000	20	
ZJ087200	Solid	NL082000		0.500	4.500	20	
ZJ105610	Hollow	NL101800		0.625	3.500	18	
ZJ126802	Hollow	NL121001		0.750	4.250	12	
ZJ127600	Hollow	NL121001		0.750	4.750	12	
ZJ127603	Solid	NL121001		0.750	4.750	12	
ZJ168000	Solid	NL161403		1.000	5.000	14	
ZJ169601	Hollow	NL161403		1.000	6.000	14	
ZJ169602	Solid	NL161403		1.000	6.000	14	

Hollow axles have zerk fitting for lubrication and solid axles are without lubrication fitting. All axles come complete with lock nut. Consult factory for optional slotted nuts and lock pins.



# Replacement Parts

## Spanner Bushings & Thrust Washers



Spanner Bushing



Nylon Sealed Retaining Thrust Washer



Powdered Iron Step Retaining Thrust Washer

Part Number	Spanner Bushing ID (Inches)	Spanner Bushing OD (Inches)	Spanner Bushing Length (Inches)	Spanner Material	Lubrication Holes	Matching Thrust Washers	Washer I.D. (Inches)	Washer O.D. (Inches)
ZF060824	0.375	0.500	1.500	Stainless	1	WA082406	0.500	1.500
ZF06082401	0.375	0.500	1.500		1			
ZF060826	0.375	0.500	1.625		1	WA082400	0.500	1.500
ZF081030	0.500	0.625	1.875		2	WA102400	0.625	1.500
ZF081033	0.500	0.625	2.063		2	WA102400	0.625	1.500
ZF081036	0.500	0.625	2.250		2	WA102400	0.625	1.500
ZF081038	0.500	0.625	2.375		2	WA102400	0.625	1.500
ZF081039	0.500	0.625	2.438		2	WA102400	0.625	1.500
ZF081046	0.500	0.625	2.875		2	WA102400	0.625	1.500
ZF081230	0.500	0.750	1.875		Stainless	2	WA122600	0.750
ZF081236	0.500	0.750	2.250	2		WA122600	0.750	1.625
ZF081238	0.500	0.750	2.375	2		WA122600	0.750	1.625
ZF081239	0.500	0.750	2.438	2		WA122600	0.750	1.625
ZF081240	0.500	0.750	2.438	2		WA122603	0.750	1.625
ZF081248	0.500	0.750	3.000	2		WA122600	0.750	1.625
ZF081264	0.500	0.750	4.000	none		WA122600	0.750	1.625
ZF101239	0.625	0.750	2.438	2		WA122600	0.750	1.625
ZF121648	0.750	1.000	3.000	2		WA163900	1.000	2.438
ZF121657	0.750	1.000	3.500	2		WA163900	1.000	2.438
ZF121664	0.750	1.000	4.000	none		WA163900	1.000	2.438
ZF121677	0.750	1.000	4.812	none		WA163900	1.000	2.438
ZF162057	1.000	1.250	3.563	none		WA203903	1.250	2.438
ZF162073	1.000	1.250	4.563	none		WA204800	1.250	3.000
ZF162089	1.000	1.250	5.563	none		WA204800	1.250	3.000
ZF202458	1.250	1.500	3.563	none		WA245600	1.500	3.500
ZF202473	1.250	1.500	4.563	none		WA245600	1.500	3.500
ZF202489	1.250	1.500	5.563	none		WA245600	1.500	3.500

All spanner bushings are hardened to form precision inner race for roller bearings. Except as noted by "none", all spanner bushings are cross drilled for lubrication through hollow axle. Thrust washers are hardened. They are not part of the spanner bushing assembly and must be ordered separately. Thrust washers are not required with ball bearings, 2 piece delrin bearings, or with combo washers.

## PARTS FOR EMPIRE 15 AND 60 SERIES RIGS

### AXLES AND NUTS



Hollow Axle & Nut

Solid Axle & Nut

Axle Number	Type	Matching Nut	Diameter (inches)	Length (inches)	Threads (per inch)
ZJ085400	Hollow	NL082000	0.500	3.375	20
ZJ085403	Solid	NL082000	0.500	3.375	20

### SPANNERS AND THRUST WASHERS



Spanner Bushing

Spanner Number	Spanner ID (inches)	Spanner OD (inches)	Spanner Length (inches)	Lubrication Holes	Matching Thrust Washers	Washer ID (inches)	Washer OD (inches)
ZF081239	0.500	0.750	2.438	2	WA122600	0.750	1.625

### ROLLER BEARINGS & RETAINER WASHERS



Bearing Number	Bearing ID (inches)	Bearing OD (inches)	Bearing Length (inches)	Plain Retaining Washer	Rubber Sealed Retaining Washer	Nylon Combo Washer	Sintered Iron Combo Washer	Washer ID (inches)	Washer OD (inches)
ZB121930	0.750	1.188	1.875	WA121900	WA121990	WA121905	WA121999	0.750	1.188

### DELTRIN BEARINGS (IB POLYPROPYLENE WHEELS ONLY)

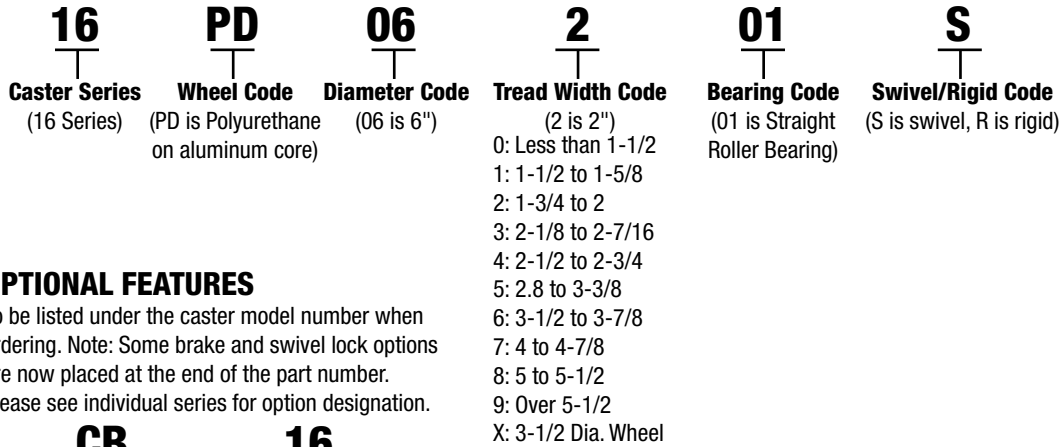


Bearing Number	Bearing ID (inches)	Bearing OD (inches)	Bearing Length (inches)	NOTE: Two piece Delrin bearing (spanner not included)
TF121912	0.750	1.188	.75	

# Product Numbering System

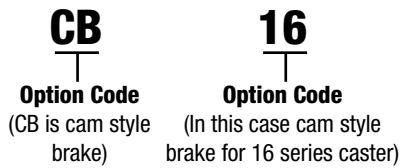
## CASTERS

16PD06201S is a 16 Series 6" x 2" swivel top plate caster with Polyurethane/Aluminum core wheel and straight roller bearing. See below for caster number breakdown.



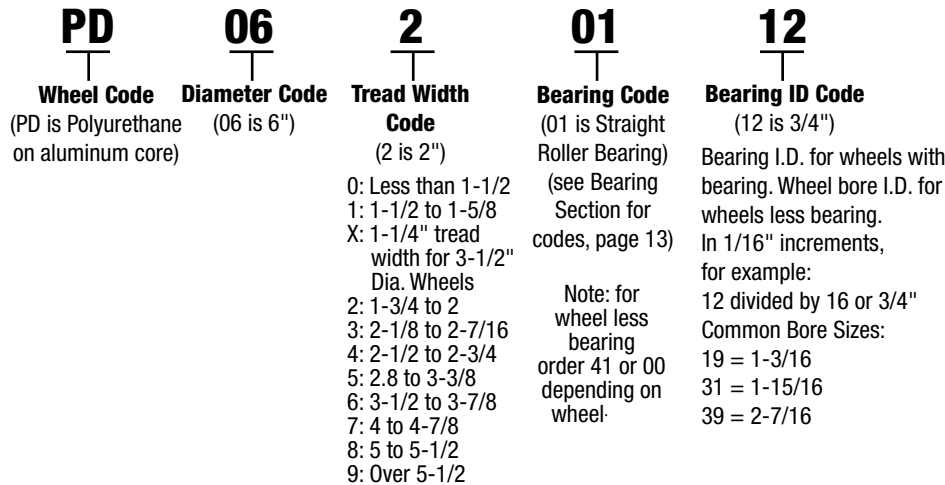
## OPTIONAL FEATURES

To be listed under the caster model number when ordering. Note: Some brake and swivel lock options are now placed at the end of the part number. Please see individual series for option designation.



## WHEELS

PD0620112 is a 6" x 2" Polyurethane/Aluminum core with 3/4" straight roller bearing.



## RIGS

16YA06201S is a Medium-heavy duty swivel rig that would accommodate the above 6" x 2" PD wheel.

